



Self-Priming Diaphragm Pumps

- **Aluminum Construction**
(Except model 2D-X3/4 which is Cast Iron)
- **Self-priming to 25 ft.**
- **Neoprene or "DuraBlue 1000™" Diaphragm Material**
- **2", 3" and 4" NPT Port Sizes**
- **Solids Handling Capabilities to 2-1/4" diameter**
- **Driver Options: Gasoline Engine, Explosion Proof Electric Motor, or Basic Unit (less driver)**
- **Delivers up to 150 GPM**
- **Two (2) Wheel Truck Assembly Standard**
(Except Model 2D-X3/4 Which is Furnished with a Stationary Base).



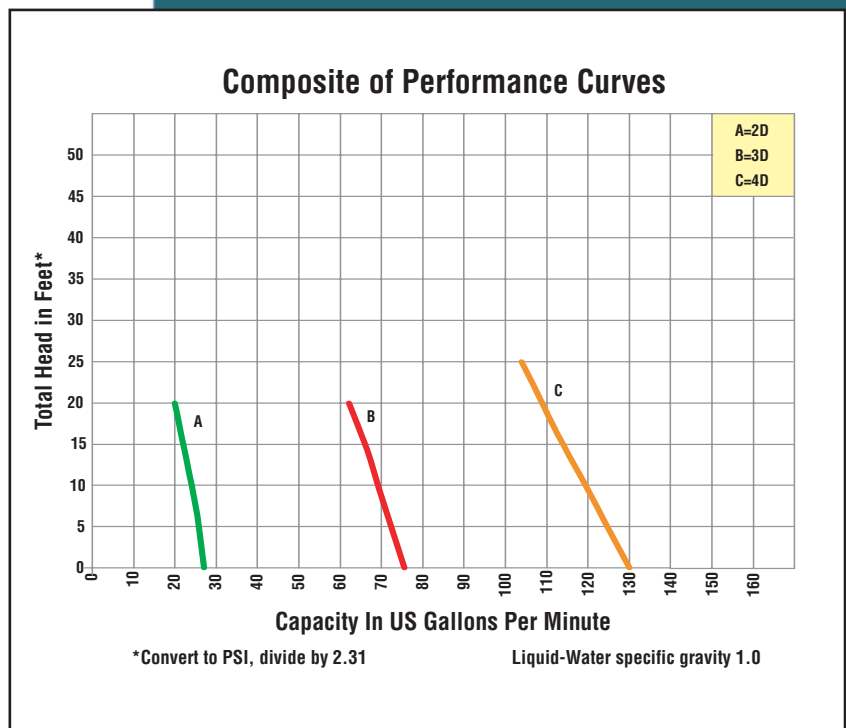
Model 3D-X 1.5 1P

The Gorman-Rupp line of Diaphragm pumps is designed to pump sludge, sewage, mud, and other heavy liquids that have the ability to flow. All models are self-priming, have built-in flap valves, and include a suction strainer. The 3" and 4" models are furnished with a 2 wheel truck assembly. Models are available with explosion-proof motors, Briggs & Stratton gasoline engines, or a basic model, less driver (furnished with a flex coupling). Standard diaphragms are "DuraBlue 1000™" in 3" and neoprene in 2" pump and 4" pumps.

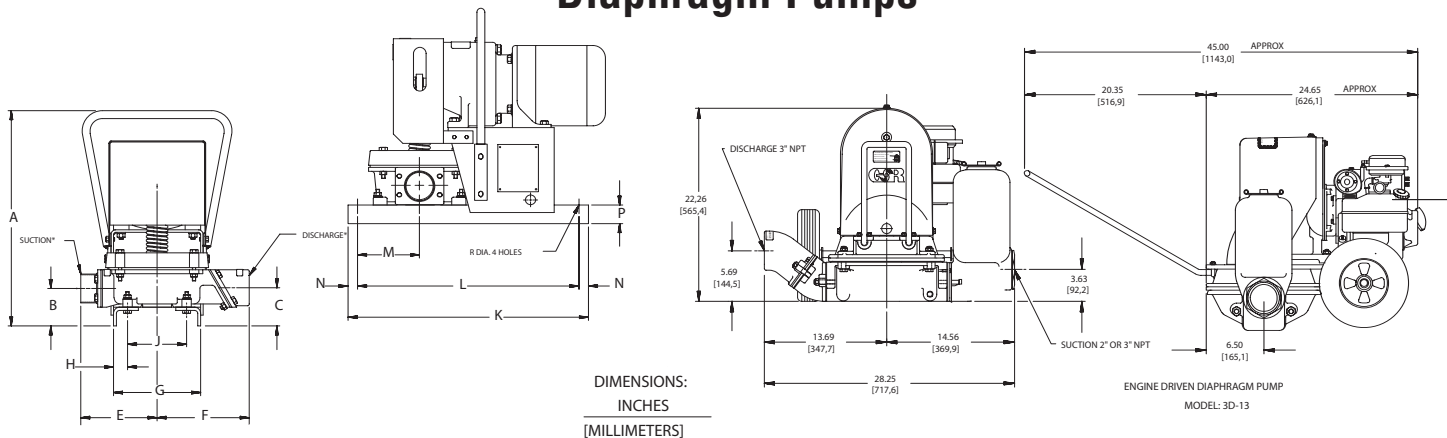
PREMIUM HEAVY DUTY



Model 3D-13



Diaphragm Pumps

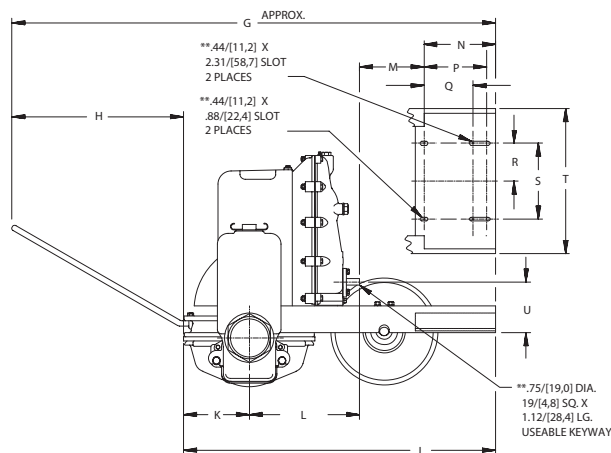
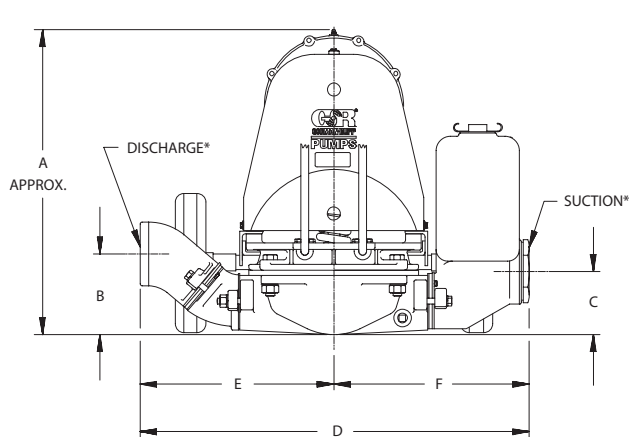


DIMENSIONS:
INCHES
[MILLIMETERS]

MODEL	A	B	C	D	E	F	G	H	J	K	L	M	N	P	R	SUCT*	DISCH*
2D-X.75 1P	17.25 [438,2]	3.00 [76,2]	3.00 [76,2]	13.52 [343,4]	6.00 [152,4]	7.39 [187,7]	7.00 [177,8]	1.12 [28,4]	4.75 [120,6]	19.25 [489,0]	17.75 [450,9]	5.00 [127,0]	.75 [19,0]	1.50 [38,1]	.41 [10,4]	2.00	2.00
2D-X.75 3P	17.25 [438,2]	3.00 [76,2]	3.00 [76,2]	13.52 [343,4]	6.00 [152,4]	7.39 [187,7]	7.00 [177,8]	1.12 [28,4]	4.75 [120,6]	19.25 [489,0]	17.75 [450,9]	5.00 [127,0]	.75 [19,0]	1.50 [38,1]	.41 [10,4]	2.00	2.00

(*) STANDARD NPT PIPE THREADS.

2" MOTOR DRIVEN DIAPHRAGM PUMPS



MODEL	A	B	C	D	E	F	G	H	J	K	L	M	N	P	Q	R	S	T	U	SUCT*	DISCH*
3D-X1.5 1P	22.26 [565,4]	5.69 [144,5]	3.63 [92,1]	28.25 [717,6]	13.69 [347,7]	14.56 [369,9]	49.44 [1255,7]	19.50 [495,3]	29.94 [760,4]	6.50 [165,1]	12.31 [312,7]	N/A	N/A	N/A	N/A	N/A	N/A	N/A	N/A	2.00/ 3.00	3.00
4D-B	26.32 [668,5]	6.96 [176,8]	5.47 [138,9]	33.60 [853,4]	16.73 [424,9]	16.87 [428,5]	54.25 [1378,0]	19.25 [489,0]	35.00 [889,0]	7.38 [187,4]	12.38 [314,2]	7.25 [184,2]	8.00 [203,2]	7.00 [177,8]	5.50 [139,7]	4.25 [108,0]	8.50 [215,9]	16.25 [412,8]	5.25 [133,4]	3.00/ 4.00	4.00
4D-X3 1P	26.32 [668,5]	6.96 [176,8]	5.47 [138,9]	33.60 [853,4]	16.73 [424,9]	16.87 [428,5]	54.25 [1378,0]	19.25 [489,0]	35.00 [889,0]	7.38 [187,4]	12.38 [314,2]	7.25 [184,2]	8.00 [203,2]	7.00 [177,8]	5.50 [139,7]	4.25 [108,0]	8.50 [215,9]	16.25 [412,8]	5.25 [133,4]	3.00/ 4.00	4.00

(*) STANDARD NPT PIPE THREADS.

(**) MODELS 4D ONLY

3" & 4" MOTOR DRIVEN & BASIC DIAPHRAGM PUMPS

Model No.	Description/ Type of Pump	Ship Wt (Lbs)	Driver Type & HP	Port size Suc x dis (NPT)	Basic Construction	Seal Type & Elastomer/ Faces	VAC or Tank Size	FL Amps or Run time	Motor Enclosure
2D-X.75 1P	Diaphragm Pumps	120	Electric Motor	2" x 2"	C.I.	Neoprene	115/230 1p	1.88 hrs.	Exp. Proof
2D-X.75 3P	Diaphragm Pumps	120	Electric Motor	2" x 2"	C.I.	Neoprene	230/460 3p		Exp. Proof
3D-13	Diaphragm Pumps	204	B&S 5	3" X 2"	Alum.	DuraBlue™ elastomer	3 gal.		NA
3D-X1.5 1P	Diaphragm Pumps	258	Electric Motor	3" or 2" x 3"	Alum.	DuraBlue™ elastomer	115/230 1p	N/A	Exp. Proof
4D-B	Diaphragm Pumps	345	Electric Motor	4" or 3"x4"	Alum.	Neoprene	N/A		For 182T & 184T
4D-X3 1P	Diaphragm Pumps	440	Electric Motor	4" or 3"x4"	Alum.	Neoprene	115/230 1p		Exp. Proof

Standard Features

- Built-in flap valves
- Includes suction strainer
- Model 3D-13 powered by 5 HP Briggs & Stratton engine
- Model 4D-B is basic pump less motor (furnished with flexible coupling)
- Electric motor driven models furnished with explosion proof motors

WARNING: Do not use in explosive atmosphere or for pumping volatile flammable liquids.

The Gorman-Rupp Company reserves the right to discontinue any model or change specifications at any time without incurring any obligation.