



Self-Priming Diaphragm Pumps

- **Sand Cast Aluminum Construction for Portability and Durability**
- **Nylon Reinforced Neoprene Diaphragm**
- **3" NPT Suction and Discharge**
- **1 5/8" Diameter Solids Handling Capability**
- **Modular Component Design Permits Easy Maintenance and Cleanout**
- **Driver Options: Gasoline Engine, Electric Motor or Pneumatic Motor Driven**
- **Delivers up to 90 GPM**
- **Maximum Temperature 180° F**

The AMT line of 3" Diaphragm pumps, often referred to as Mud pumps or Sludge pumps, is designed to pump mud, slurry, sewage and thick liquids that have the ability to flow. AMT Diaphragm pumps are available with a choice of drivers to meet your application requirements: Briggs & Stratton gasoline engine, 115VAC electric motor with weatherproof cord and switch or a Gast pneumatic motor. Built in molded polyurethane flapper/check valve assures self-priming to 20 feet after initial prime. Heavy duty gear box with precision ground triple strength steel gears is designed to operate pumps at 40 strokes per minute for electric motor Model 3351-96 and 60 strokes per minute for Models 3350-96 & 3353-96. Each unit features 3" NPT steel suction strainer, two 3" NPT nipples and wheel kit with 10" semi-pneumatic transport wheels for portability. Pumps are designed for use with non-flammable liquids which are compatible with pump component materials. Suction and discharge port size **cannot** be reduced.

1-1/2" Hand Operated Diaphragm Pump

The AMT Model 4790-97 diaphragm pump is designed for the transfer of fresh or salt water containing sand, small stones and debris or other liquids which are compatible with pump component materials. The pump is constructed of bronze with stainless steel hardware and Neoprene diaphragm and flapper valves. The unit is equipped with an 18" brass handle and cast iron pumping platform with built in handle storage. The pump is self-priming to 20 feet and delivers 26 oz. per stroke. Suction and discharge are 1-1/2" NPT and will accommodate a 2" slip-on hose.*

*Hand pumps are designed for use with liquids which are compatible with pump component materials.



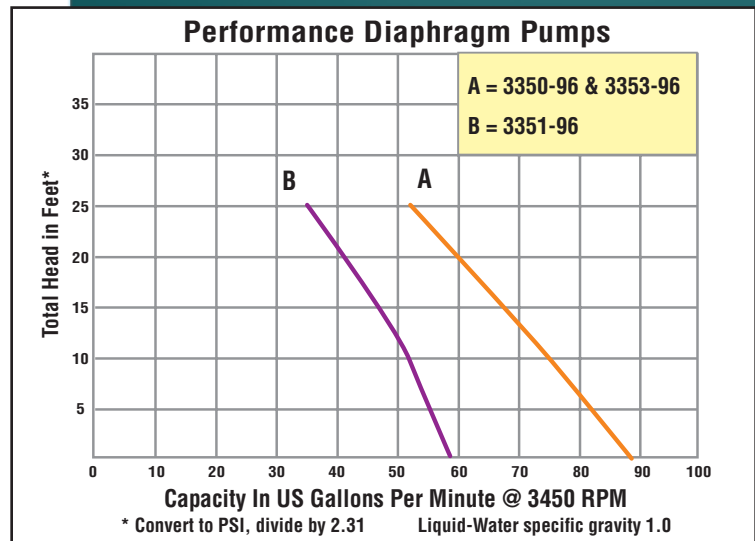
Model 3350-96



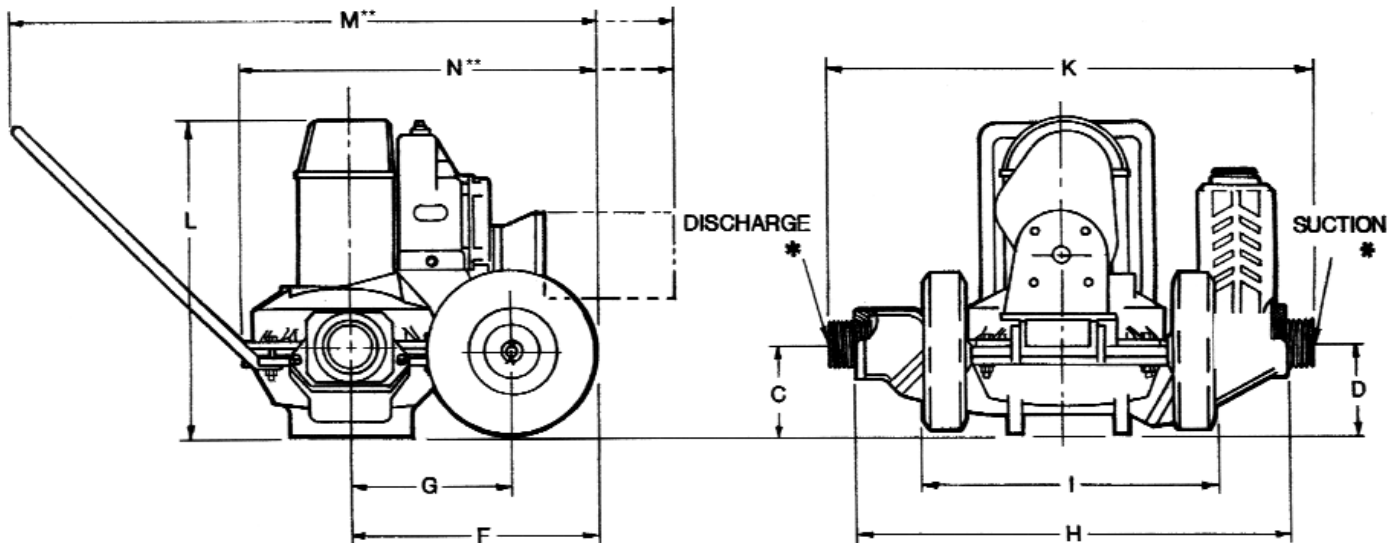
Model 3351-96



Model 4790-97



Diaphragm Pumps



MODEL#	TYPE	SUC*	DIS*	C	D	F	G	H	I	K	L	M**	N**	SHPG WT.
3350-96	Gas	3"	3"	6.2	6.3	15.0	10.0	26.6	17.9	30.0	20.6	40.2	24.5	162 lbs.
3351-96	Electric	3"	3"	6.2	6.3	15.0	10.0	26.6	17.9	30.0	20.6	44.0	28.5	187 lbs.
3353-96	Air	3"	3"	6.2	6.3	15.0	10.0	26.6	17.9	30.0	20.6	39.0	21.9	154 lbs.

(*) Standard NPT (female) pipe thread.

(**) This dimension may vary due to motor or engine manufacturer's specifications.

NOTE: Dimensions have a tolerance of $\pm 1/8"$.

Standard Features for Models 3350-96, 3351-96 & 3353-96

Models 3350-96:

- > 3.5 HP B&S I/P Gasoline Engine with Recoil Start
- > Cast Iron Cylinder Sleeves
- > 4 Qt. Fuel Tank
- > Dual Element Air Cleaner
- > Super Lo-Tone Muffler
- > Oil Alert

Models 3351-96:

- > 1.5 HP, 1 Phase, 1725 RPM, 115/230V, 60 Hz, TEFC Electric Motor
- > Hi-torque Motor with Manual Reset Overload
- > 20 ft. Cord for 115VAC
- > Weatherproof On/Off Switch Mounted in Conduit Box

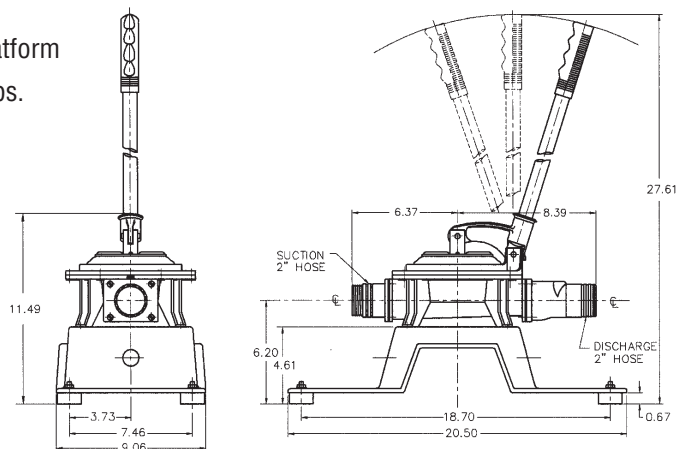
Models 3353-96

- > 1.75 HP Gast Air Motor, 56C NEMA Mounting Flange
- > Generates 6.5 to 57 in lbs. Torque
- > 300 to 3000 RPM Motor
- > Self-Sealing Motor with Self Adjusting Vanes

Standard Features for Model 4790-97

- > Self-priming to 20 ft.
- > Built in Handle Storage
- > 26 oz. per Stroke
- > Bronze Construction with Stainless Steel Hardware
- > Neoprene Diaphragm and Flapper Valves

- > 18" Brass Handle and Cast Iron Pumping Platform
- > Shipping Weight: 32 lbs.



NOTE: All dimensions have a tolerance of $\pm 1/8"$

(*) 1 1/2" NPT (female) pipe thread or 2" ID Slip-on Hose.

NOTE: Dimensions have a tolerance of $\pm 1/8"$.

WARNING: Do not use in explosive atmosphere or for pumping volatile flammable liquids.

The Gorman-Rupp Company reserves the right to discontinue any model or change specifications at any time without incurring any obligation.

335X-CP / 0901